

# Frio Draw Memorial SDT

May 31<sup>st</sup> - June 2<sup>nd</sup>, 2024

## How to get here

**GPS coordinates:** 34.64351751498653, -102.86272979295568

**Google Maps/Apple Maps:** Do not use the location address as it will bring you on the other side of town. If not using GPS coordinates please search for “Frio Draw Meat” or “Hefner Cattle”

## Schedule

We will have 2 Open. 2 Nursery and 2 Open Ranch.

Friday May 31<sup>st</sup> – Open 1, Nursery 1, OR 1

Saturday June 1<sup>st</sup> – Open 2, Nursery 2, OR 2

Sunday June 2<sup>nd</sup> – Double lift

Open: handlers meeting 7am; Start time: 7:15 am

Nursery: handlers meeting 10am followed by first run

Open Ranch handlers meeting will follow Nursery

*Schedule might change at trial host's discretion*

## Judges

Open Judge: Susan Gruwell (AZ)

Nursery: Maci McGraw (TX)

Open Ranch: Joanne Hardy (TX)

Doublelift Judge: Russell McCord (TX)



**Frio Draw Memorial SDT**

*May. 31-Jun. 2, 2024*

## On site Camping

Dry camping will be available on designated areas (see map for details)

No hookups, water well available. No trash cans on site, pack in – pack out: please be respectful of the property.

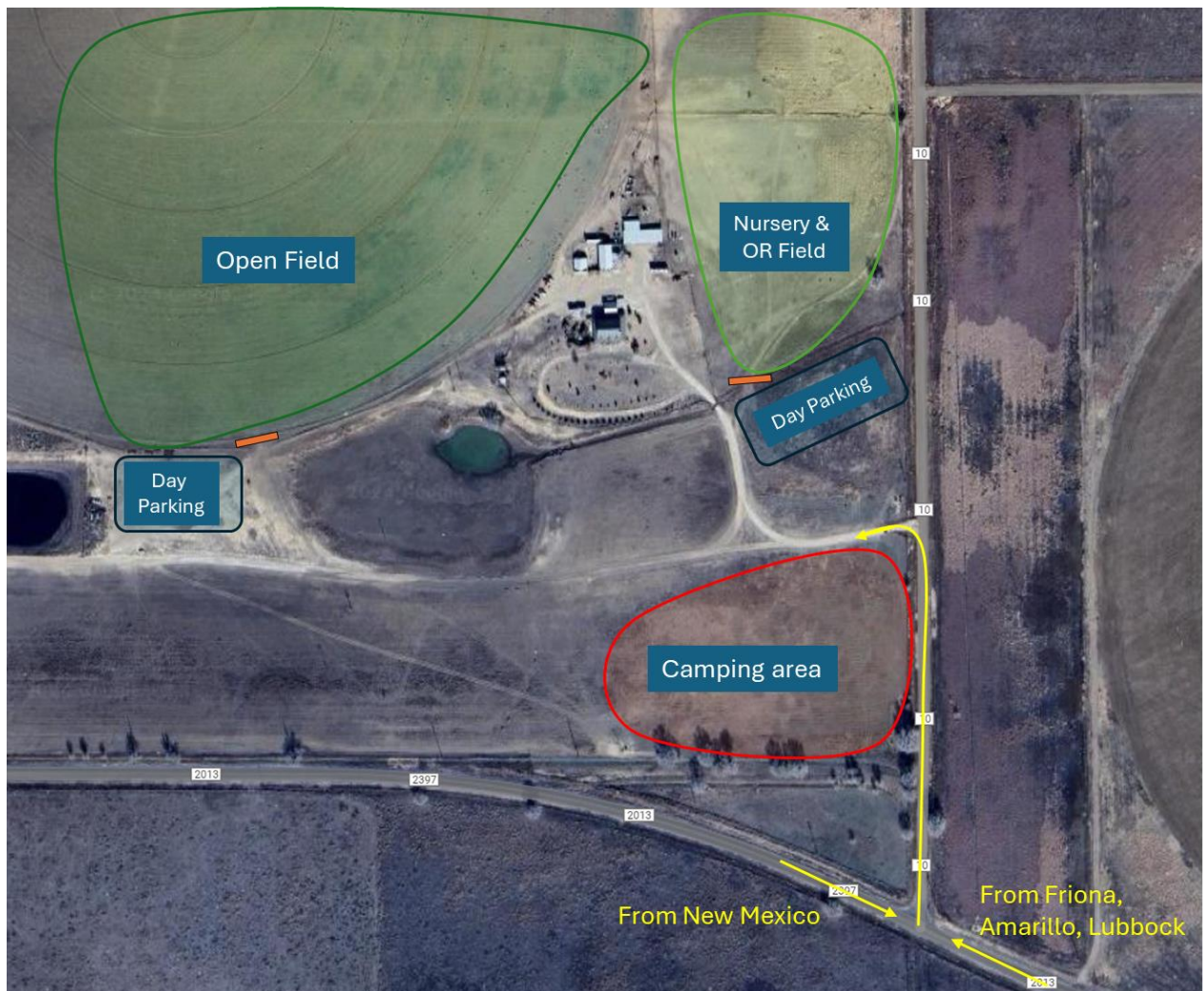
## Day Parking

Day parking is available on site near the open and nursery/OR fields (see map for details)

## Get Together Dinner

On Friday May 31<sup>st</sup> we will have a dinner sponsored by Frio Draw Meat. Expect juicy lamb and beef hamburgers. Bring your own chair. Drinks and side dishes are welcome.

Dinner will start about 1 hour after the last run of the day. We are expecting it will be ~7:30pm.



**Frio Draw Memorial SDT**  
May. 31-Jun. 2, 2024